

ECX-04U

Improving on Best-in-Class!

Belden's new FiberExpress (FX) Enterprise Closet X (ECX) Patch Panel system is an elegant, intuitive and flexible solution that has been designed to maximize installer flexibility when compared to industry-leading solutions. FX ECX has been optimized for LAN environments, and provides an easy-to-deploy, efficient solution for installers.



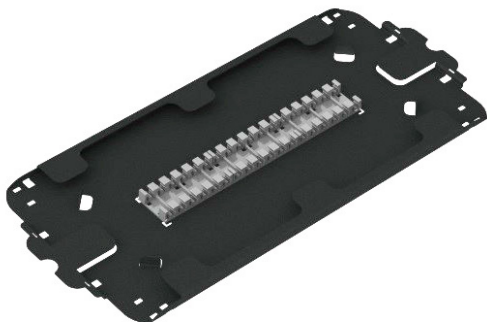
BENEFITS

- **Maximum installer flexibility for frequent MAC work:** Front and rear removable cassettes (patent pending) on all housings (1U, 2U, 4U). Multiple options for cable strain relief.
- **Simplified installation with fewer detachable components:** Cassette rails molded into housing. No need for extra rail components that can get lost.
- **Reduce space and cost:** ECX accepts mixed-media copper/fiber using KeyConnect frames. Leverage our broad line of KeyConnect copper connectivity products.
- **Eliminate cassette pinch points:** ECX Splice Cassettes integrate slack management into the cassette lid. This simplifies fiber routing and eliminates pinch points.



FEATURES

- Up to 192 LC Duplex ports (384 fibers) in 4U housing
- Tool-less, removable, clear doors and top covers
- Clear top cover for better light and visibility
- Removable front and rear housing (4U)
- Complete family of cassettes and frames
 - LC, SC, ST and MPO adapters available
- Supports all modern field-termination techniques
 - Pigtails with splice trays
 - Splice cassettes
 - Splice-on connectors (FX Fusion)
 - Mechanical splice connectors (FX Brilliance Universal)



Ordering Information

FX ECX Housings

Description	Max Capacity	Belden Part Number
1U Housing	2 Cassettes or Frames	ECX-01U
2U Housing	4 Cassettes or Frames	ECX-02U
4U Housing	12 Cassettes or Frames	ECX-04U

Kits/Accessories

Description	Belden Part Number
3 Inch Bracket Mount (4U)	ECX-BRKTMT-3
Flush Bracket Mount (4U)	ECX-BRKTMT-0
Lock Kit (1U/2U/4U)	ECX-LOCKKIT

Additional resources available, see belden.com/ecx for more information.

Splice Cassettes

Description	Belden Part Number			
	OM3 Aqua Adapters	OM4 Erika Violet Adapters	OS2 Blue Adapters	OS2 APC Green Adapters
LC Duplex				
12 (24)	FC3X12LDFS	FC4X12LDFS	FCSX12LDFS	FCSX12LAFS
SC Duplex				
06 (12)	FC3X06SDFS	FC4X06SDFS	FCSX06SDFS	FCSX06SAFS

Please see table below for more adapter/port count options!

To use the configuration matrices, make a selection from each category and combine to form a custom part number. See examples below.

FX ECX Splice Cassette Options

Part number example from configuration shown below:

FCSX06SCFS

FC	S	X	06	SC	FS					
	Fiber Type	Family		Port Count (Patch Side)		Connector (Patch Side)		Connector (Trunk Side)		
	1	OM1	X	ECX	03	3 ports	LD	LC Duplex	FS	Splice Cassette
	3	OM3			06	6 ports	LA	LC Duplex APC		
	4	OM4			08	8 ports	SD	SC Duplex		
	S	OS2			12	12 ports	SC	SC Simplex		
							SA	SC Duplex APC		
							SB	SC Simplex APC		
							ST	ST		

FX ECX Frames/Adapter Strips

Description	Belden Part Number			
Patch Ports (fibers)	OM3 Aqua Adapters	OM4 Erika Violet Adapters	OS2 Blue Adapters	OS2 APC Green Adapters
LC Duplex				
12 (24)	FF3X12LD	FF4X12LD	FFSX12LD	FFSX12LA
SC Duplex				
06 (12)	FF3X06SD	FF4X06SD	FFSX06SD	FFSX06SA

Please see table below for more adapter/port count options!

FX ECX Frame Options

Part number example from configuration shown below:

FFSX06SC

FF	S	X	06	SC				
	Fiber Type	Family		Port Count (Patch Side)		Connector (Patch Side)		
	1	OM1	X	ECX	03	3 ports	LD	LC Duplex
	3	OM3			06	6 ports	LA	LC Duplex APC
	4	OM4			08	8 ports	SD	SC Duplex
	S	OS2			12	12 ports	SC	SC Simplex
							SA	SC Duplex APC
							SB	SC Simplex APC
							ST	ST

To learn more call us at
1.800.BELDEN.1
or visit www.belden.com/ecx

© Copyright 2017, Belden Inc.
FX ECX Product Bulletin_PB00095_ECOS_BDC_0517_A_AG